

Clover Connections

Allen County 4-H

March/April 2024



Welcome 4-H Families!

4-H season is back and starting strong for 2024!

Welcome to all the NEW members and families! We hope that you have found a club that has welcomed you with open arms. Each club should have new member packets that are full of great new member resources!

Clover Connections is our bimonthly newsletter. We try to pack the newsletter with all prevalent information, they are usually full of information!

Cloverbud members will be receiving their pumpkin seeds in the mail in late April. Make sure to get them in the ground once you get them.

We are looking forward to a great 4-H year.

Please let us know if there is anything we can assist with you.

Wishing you the best!
-Kelly Coble & Alyssa Young

4-H Online Enrollment

4-H online is new and improved for 2024! Though the layout is different, most of features are still the same. It is also more mobile friendly – so it is easier to access on a cell phone or smaller tablet.

The county deadline for enrollment is April 15, 2024! Please use the steps below to complete your enrollment.

•Visit this direct link to enroll: oh.4honline.com

•Returning members/families already have a profile – enter your password from the previous years and log in

•If you or another of your family members are already in the program or have been in recent years – please do not create a new profile. Contact the office and we can help with log in.

•The registration process allows you to update personal information annually such as; age, grade, contact information and years in projects etc.

•Years in 4-H and years in projects are for your own records but please be sure to check accuracy

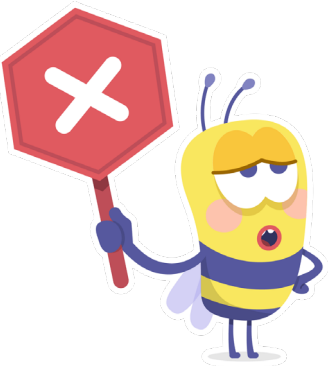
•Cloverbud members – add project 710 Cloverbud Activities

•Once your enrollment has been approved, you will not be able to make any changes to your account – all changes will need to be made by contacting Kelly (coble.19@osu.edu)

•Still need help? Give us a call at 419-879-9108, email Kelly (coble.19@osu.edu), Alyssa (young.3319@osu.edu) or Joanne (rex.87@osu.edu)



Across County Line Policy



OSU Extension policy is that youth should participate in the 4-H program in their county of residence. Each county 4-H program receives money for operation from their county government and local volunteers work hard to support their local programming. Therefore, across county membership is strongly discouraged.

If you have kids interested in joining your club that live out-of-county, they **MUST** complete a Request for Membership Across County Lines form and submit it to the 4-H educator in the county where membership is being requested. **NOTE:** This must be done as early as possible in the 4-H year as counties have different enrollment deadlines and the form may need to be processed earlier than our county deadline.

The Policy and Form may be picked up at the Extension Office or printed from our website: allen.osu.edu. The Allen County deadline for this form to be submitted is April 15.

Permission for 4-H membership across county lines should **NOT BE** assumed by the parents of the child or advisors until official notification is received from the 4-H staff in the county of request.

EquiStep Requirement

Requirement for ALL Horse Members!

EquiSTEP is an annual statewide requirement for all youth participating in Ohio 4-H Horse Program activities.

EquiSTEP replaces the statewide requirement of reading the Horse, Safety, and You (191R) resource and viewing Every Time, Every Ride and Horses, Kids, and Ethics videos for youth and their families who are new to the 4-H horse program.

The EquiSTEP curriculum focuses on helmet safety, equine safety & handling, equine health & nutrition, and sportsmanship and is designed to rotate topic every year.



EquiStep must be completed before members start riding!

EquiSTEP is designed to be completed online by each participant individually through Scarlet Canvas or administered in a group setting by a county 4-H educator to their participants, like QA for livestock market projects.

Here is the link to enroll in/access EquiSTEP:

<http://go.osu.edu/equistep2024>



4-H Camp Scholarship

2024 4-H Camp Palmer Scholarship Week

Monday, May 20 –Friday, May 24

Register for camp during scholarship week to receive \$25 off the regular camp price of \$225. **Payment is required at the time of registration!**

Quality Assurance

Allen County will continue for 2024 to offer Quality Assurance **IN-PERSON ONLY!!**

All youth who wish to complete a livestock project for 4-H or FFA are required by Ohio law to complete this training 45 days before exhibition.

ALL Jr. Fair Exhibitors with market livestock- Lactating Dairy Cow, Lactating Dairy Goat, Beef, Dairy Beef, Dairy, Goats, Poultry (Breeding & Market), Rabbits (Breeding & Market), Sheep and Swine must participate in a Quality Assurance Program to show at the Allen County Fair.



“Food Safety involves everybody in the food chain”

Quality Assurance Dates:

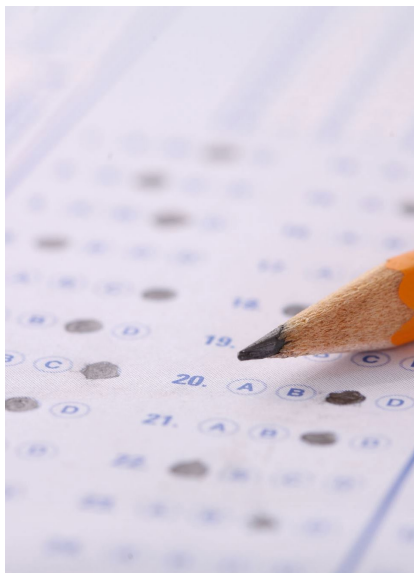
Sunday May 19th 2pm

Tuesday June 4th 7pm

Register for a Quality Assurance training here:

https://osu.az1.qualtrics.com/jfe/form/SV_6Se6byznHTWMarA

These are IN-PERSON ONLY!!



Quality Assurance Test Out

As an option youth ages 15–18-year-old can test out of their annual Quality Assurance program. Youth ages 15-18 years old who pass the QA test can test out of their annual QA program permanently. The youth member has the choice of taking either the Large Animal or Small Animal test if he/she has projects in both areas. Youth will only be allowed one chance to take the exam. Any youth who does not pass the test the first time must attend a QA session for the current year. Youth who do not pass may return the next year to try the test again.

Test Out can be scheduled the whole month of April. Contact the office (419-879-9108) to schedule a time to come in and take the test.

Meet the Future Leaders!

2024 Allen County Camp Counselors



Priya B.
Brooklynn B.
Madelyn B.
Wyatt B.
Lily C.
Kacie C.
Harper C.
Tyler C.
Tate D.
Kelsey E.
Vivian E.
Riley H.
James H.
Sarah K.
Gavin L.

Emma L.
Dakota L.
Adrian L.
Destin M.
Zane N.
Maddie N.
Claire O.
Mack O.
Leyton P.
Brody R.
Sydney R.
Abby S.
Ava T.
Kierra W.

2024 Allen County Camps!

SUMMER CAMP
SAVE THE DATE(S)!!



ALLEN COUNTY 4-H CAMP
4-H Camp Palmer
June 25th-29th

CLOVERBUD DAY CAMP
Allen County Fairgrounds
June 12th

STEM CAMP(S)
Allen County Fairgrounds
July 9th or July 17th



ALLEN.OSU.EDU

OSU Extension Allen County is excited to offer 4 summer camps this summer for children enrolled in 4-H and for those who are looking for a fun summer day camp!

4-H Camp Palmer

Held at 4-H Camp Palmer
June 25th-29th, 2024

Open to any child in 3rd-8th grade

Cloverbud Camp

Held at Allen County Fairgrounds Lima, OH
June 12, 2024

Open to any child in K-2!

STEM Camp

Held at Allen County Fairgrounds Lima, OH
July 9th OR July 17th, 2024.

Open to any child who just completed grades 3-5!

Volunteer Corner

Remember the following forms should be completed and turned into the Extension Office ASAP!

- Club Financial Report- Deadline April 15th
- Club Calendar- Deadline April 15th
- List of Club Officers- Deadline April 15th
- Club Constitution & By Laws- Deadline April 15th
- Club Inventory List- Deadline April 15th
- Across County Line Forms-Deadline April 15th
- Member Enrollment- Deadline April 15th
- Volunteer Enrollment- Deadline April 15th
- Book Order Forms- May 1st
- Horse Cards- Deadline June 1st
- Lease Forms- Deadline June 1st



ANNUAL FINANCIAL SUMMARY

Club financial reports are required for the calendar year Jan. 1, 2023 thru Dec. 31, 2023.

Reports must be submitted by April 15, 2024. Forms can be found at in your club binder. This form needs to include your clubs last bank statement. Read instructions on the main page carefully. Submit the form to Kelly at coble.19@osu.edu.

Club enrollments will not be accepted until the financial reports are filed. If you have trouble accessing and filling out the form, you may submit a hard copy. Contact the Extension office if you have trouble.

New Volunteer Information

You are NOT considered an approved adult volunteer until you complete ALL the following per Ohio State Volunteer Guidelines.

All the items listed MUST be completed by April 1st.
NO EXCEPTIONS

- Volunteer Application
- References
- 4-H Online Enrollment
- Background Check
- Interview
- New Volunteer Training (Canvas)
- Policy 1.50 Training (Canvas)
- Yearly Volunteer Update
- Approval Letter

NEW Volunteers!

Are you interested in becoming an Allen County 4-H Volunteer? The time to apply is now!

Join our growing Allen County 4-H Family, we'd love to have you!

Applications: go.osu.edu/allenteer

Are you a 2024 senior 4-H member?

We would like to
recognize you!

Email the following
information to Kelly or
Alyssa:

- Youth Name
- Youth Club
- Years in 4-H
- Favorite 4-H Project
- Favorite 4-H Memory
- Future Plans



SENIOR SPOTLIGHT



THE OHIO STATE UNIVERSITY
EXTENSION



ALLEN COUNTY 4-H YEAR

